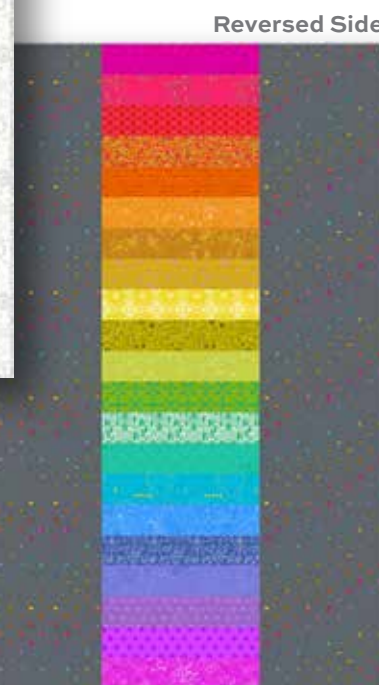
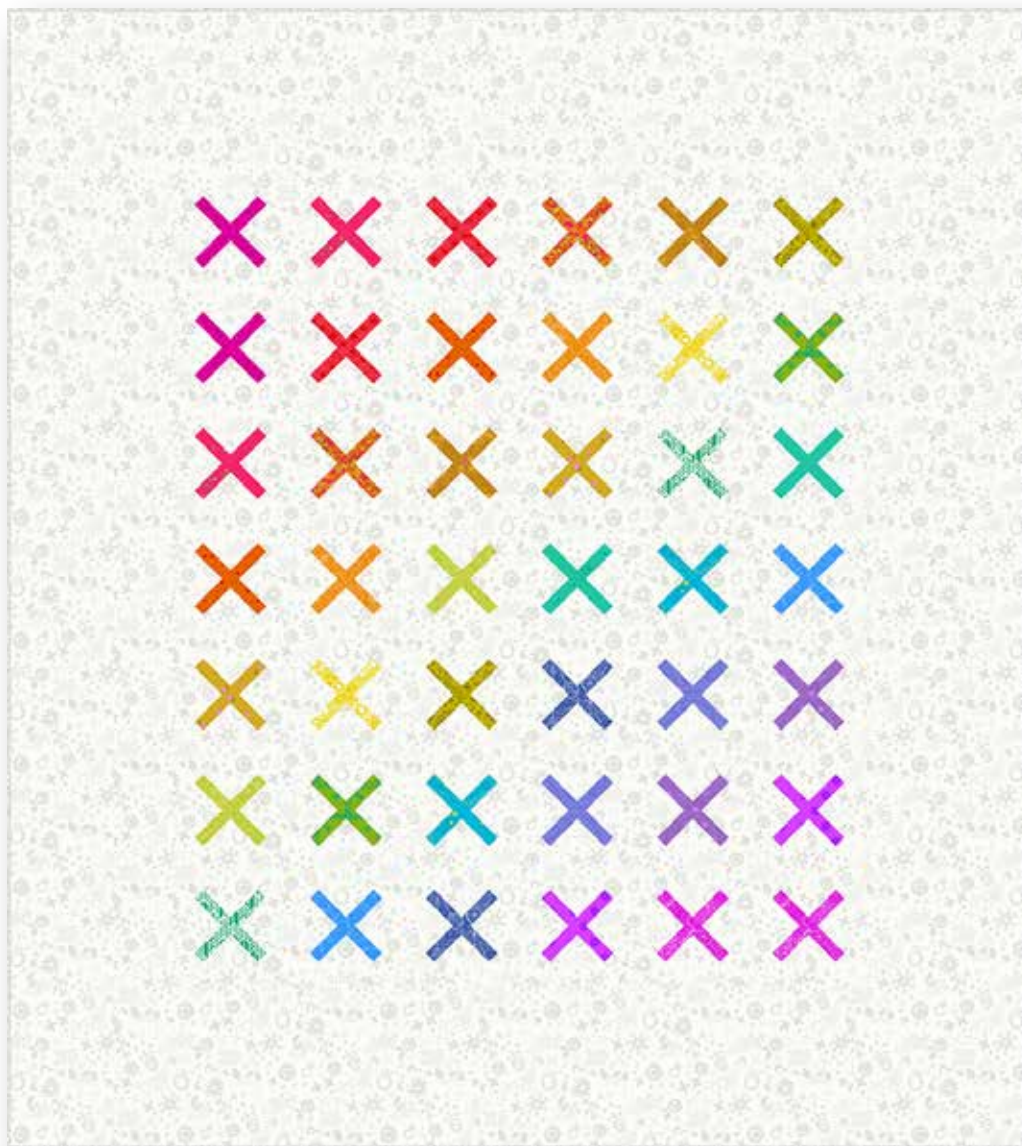


Sun Print 2022 10th Anniversary Collection

ALISON GLASS



Ten Years Quilt designed by: **Alison Glass**

Quilt Size: **66" x 73½"**

Skill Level: **Intermediate with
Paper Foundation Piecing Experience**

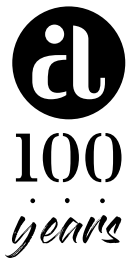
andover  makower uk

Free Pattern Download Available

1384 Broadway New York, NY 10018
Tel. (800) 223-5678 • andoverfabrics.com

Ten Years Quilt

Introducing Andover Fabrics new collection:
Sun Print 2022 10th Anniversary Collection by Alison Glass
Quilt designed by Alison Glass



Quilt finishes 66" x 73½"
42 PFP Blocks: 7½" x 7½"

If you enjoy paper-foundation piecing, then step right up to this fun and bright quilt. There is a bonus. The throw is reversible, with a bold side that repeats each of the colorful prints in a simple to piece design.

Cutting Directions

Note: Read assembly directions before cutting patches. All measurements are cut sizes and include ¼" seam allowances. A fat ¼ is a 9" x 20"-22" cut of fabric. Borders are cut the exact lengths required plus ¼" seam allowances. WOF designates the width of fabric from selvedge to selvedge (approximately 42" wide).

Fabric A

Cut (2) top/bottom borders 11" x 66½", cut lengthwise
Cut (2) side borders 11" x 53"
Cut (42) squares 9", cut in half diagonally twice to make 168 quarter-square triangles for PFP
(Read Step 1 before cutting all squares)
Cut (168) rectangles 1½" x 3½" for PFP (Read Step 1 first)

2 Prints

From each
Cut 1 strip 5" x 19" for reversible side
Cut (2) rectangles 1½" x 7" for PFP
Cut (4) rectangles 1½" x 3½" for PFP

19 Prints

From each
Cut (1) strip 4" x 19" for reversible side
Cut (2) rectangles 1½" x 7" for PFP
(Read Step 1 before cutting all prints)
Cut (4) rectangles 1½" x 3½" for PFP

Binding

Cut (7) strips 2½" x WOF for binding

Backing

Cut (1) panel 40" x 85" (Read Step 8)
Cut (1) panel 20" x 85"
Cut (2) rectangles 5" x 19"

Fabric Requirements

Fabric A	setting	Yardage	Fabric
2 prints	blocks	5½ yards fat ¼ yard each	7240 L
		8070 E1	8137 E
19 prints	blocks	fat ¼ yard each	
7021 G	7243 R1	7244 G1	7752 B1
7753 E1	7754 O1	8138 P2	8482 O1
8483 Y1	8484 P	8673 T1	8674 B1
8675 T1	8902 O1	8903 Y1	9036 G1
9253 Y1	9256 B2	9387 Y1	
Binding		½ yard	9035 LC
Backing		4¾ yards	9730 C1

Also needed:

Paper for PFP patterns such as onionskin paper, PFP paper, newsprint, tracing paper, parchment
Copier to copy PFP patterns
Washable glue stick (optional)

Making the Quilt

1. The blocks use paper-foundation piecing methods (PFP). You will make 2 blocks with each of the 21 prints. The cutting list includes the cut sizes of each patch for the PFP units. Cut patches for one block and follow directions to make the block. If the cut sizes of the patches are to your satisfaction, cut all patches. If you need them to be larger or smaller for PFP, cut them the sizes needed. Fabric A quarter-square triangles are used in patches 3 and 4. The 1½" x 3½" Fabric A rectangles are in patch 2. The longer colored strips are in patch 1 in the center unit, and the shorter strips are in patch 1 in the triangle units.
2. Photocopy or trace the PFP pattern 42 times. Hint: Paper made specifically for PFP or good quality tracing paper is ideal because it tears away easily. Be sure the printer is printing at 100%. Cut apart the 3 PFP units along the outer solid lines.

Ten Years Quilt

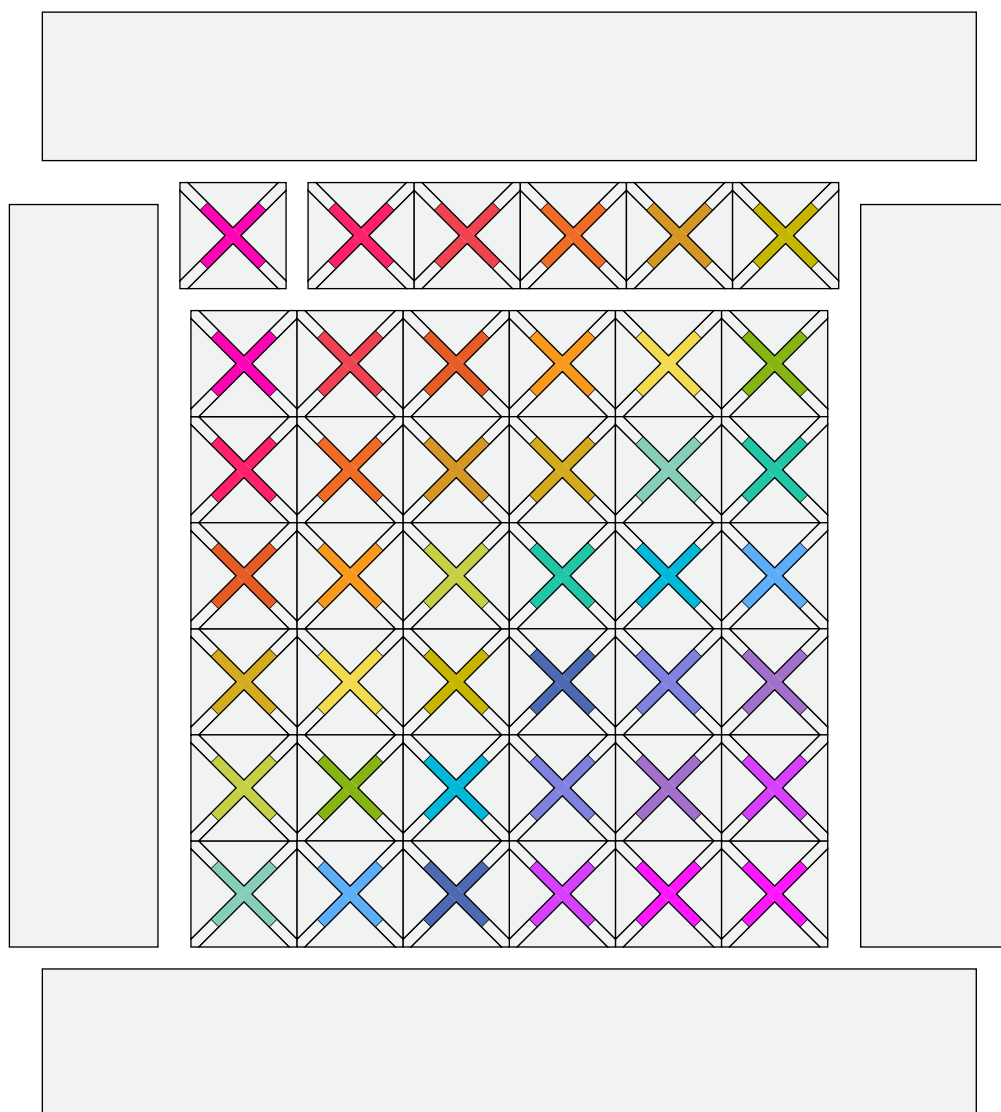
- Using PFP methods, join the patches in numerical order in each of the 3 units. Hint: Because the patches are larger, you might find it helpful to glue the fabric to the paper in a couple of places to secure while stitching. Use a shorter stitch length to make it easier to tear the paper away later. Be sure to stitch from edge to edge as indicated by the dashed lines. Trim the fabric even with the outer solid lines.
- Matching the sewing lines, pin a triangle unit to one side of the center unit. Stitch from edge to edge. Repeat to join the second triangle unit to the center. Press the block. Trim to 8" square, using the outer lines as a guide. Tear away the paper. Make 2 blocks with each of the 21 colored prints.
- Refer to the Quilt Diagram and photograph to arrange the blocks in 7 rows of 6 blocks each. Looking through a camera or the wrong end of binoculars may help you find mistakes. Once you are satisfied with the arrangement, join the blocks in rows, and then join the rows.
- Sew the short Fabric A borders to the sides. Sew the longer borders to top and bottom.

Making the Reversible Quilt

- Referring to the photograph, join the (19) 4" x 19" rectangles to make the pieced column. Stitch the 2 colored print 5" x 19" rectangles to the top and bottom. Finally, stitch backing fabric 5" x 19" rectangles to the top and bottom. (The gray rectangles will be trimmed off after quilting.) Press the seam allowances in one direction.
- Sew the wider backing panel to the left side of the pieced column. Sew the narrower panel to the right side of the column. Press seam allowances toward the gray panels. The lining is larger than the quilt top and will be trimmed even with the quilt after quilting.

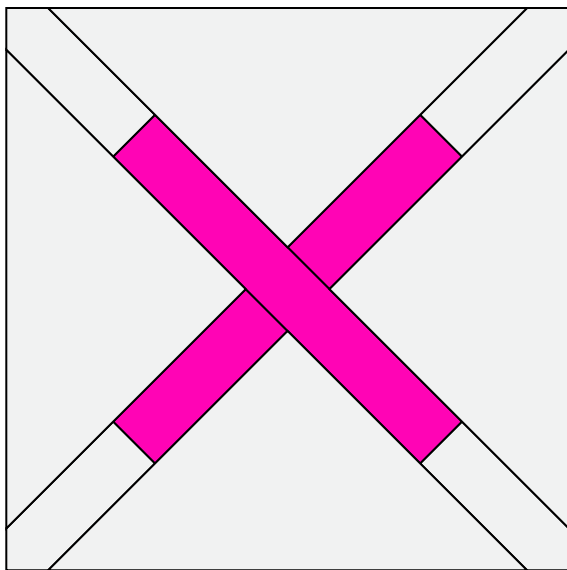
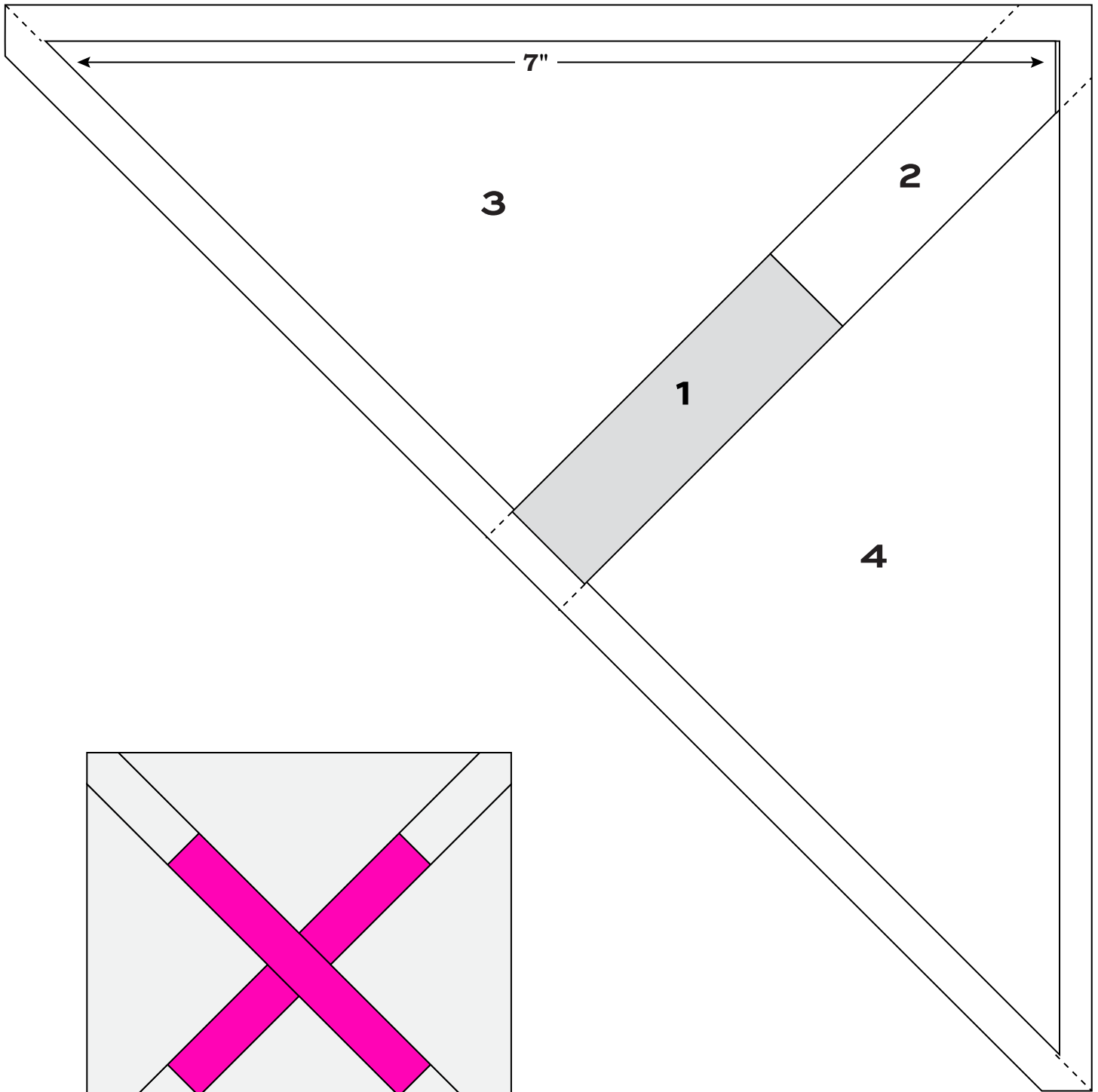
Finishing the Quilt

- Layer the quilt with batting and backing and baste. Quilt in the ditch around borders and block patches. Quilt around the printed motifs in the blocks. Quilt the border as desired. Or, quilt an overall pattern across the quilt. Bind to finish the quilt.

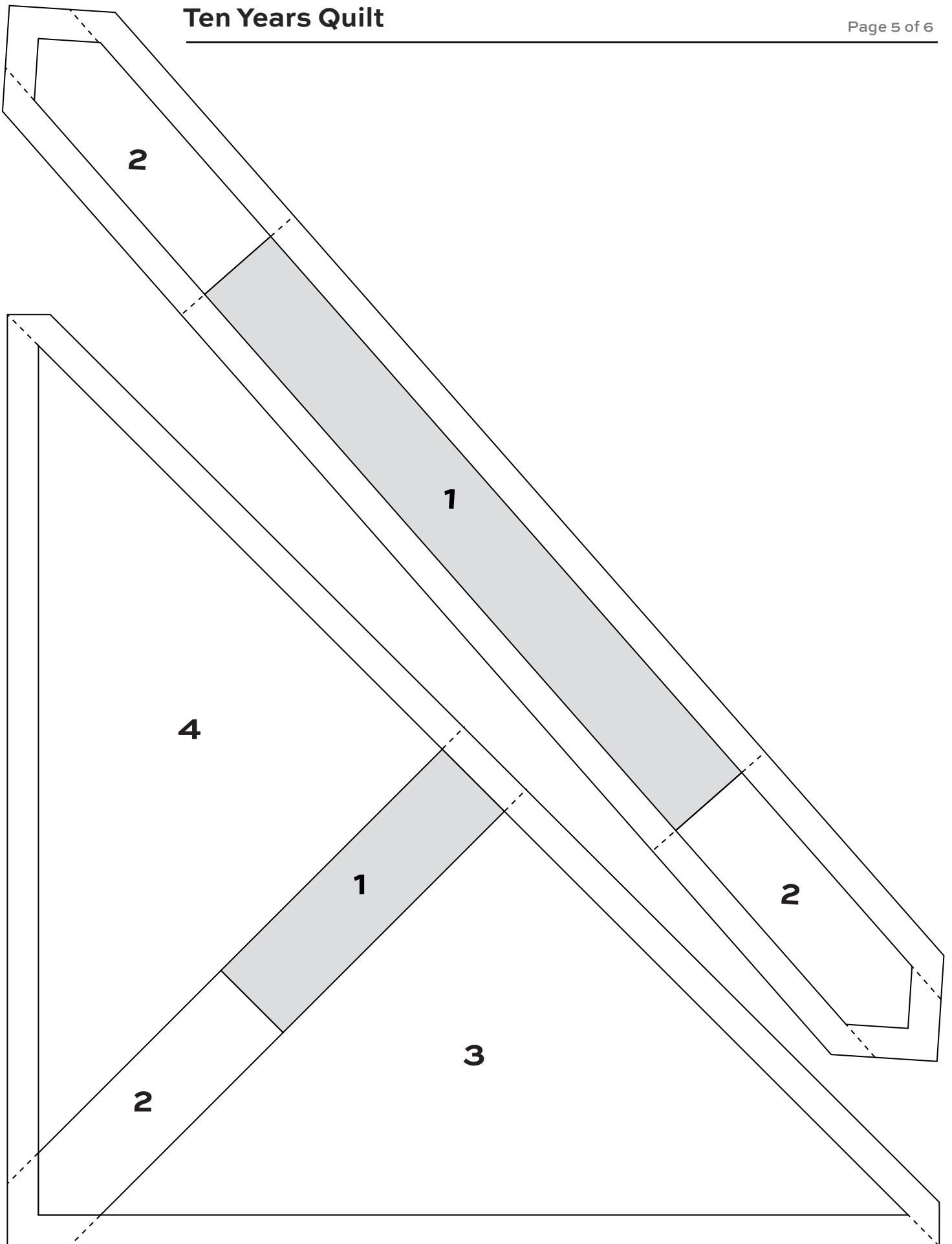


Quilt Diagram

Ten Years Quilt

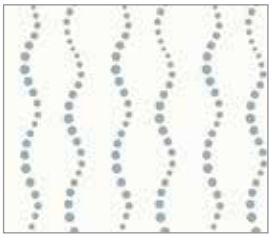


Quilt Block



Sun Print 2022 – 10th Anniversary Collection

ALISON GLASS



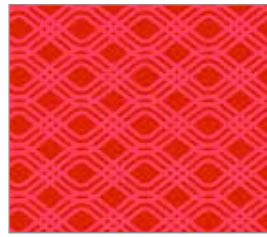
5900 C3



7021 G1*



7240 L*



7243 R1*



7244 G1*



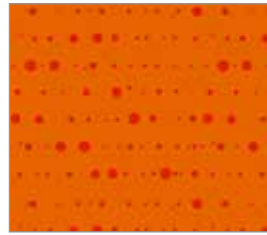
7246 C1



7752 B1*



7753 E1*



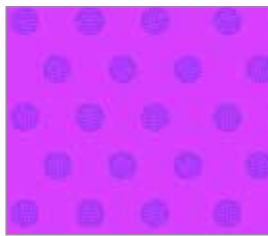
7754 O1*



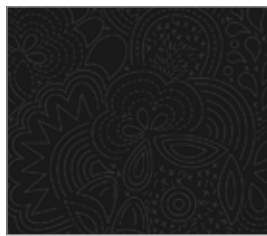
8070 E1*



8137 E*



8138 P2*



8450 K2



8482 O1*



8483 Y1*



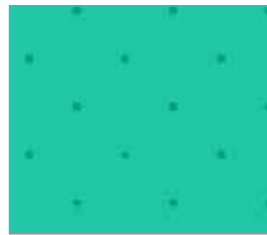
8484 P*



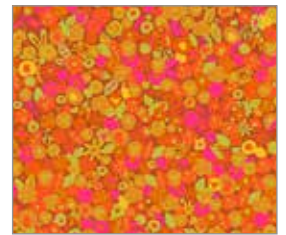
8673 T1*



8674 B1*



8675 T1*



8902 O1*



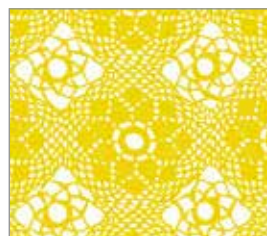
8903 Y1*



9035 LC*



9036 G1*



9253 Y1*



9256 B2*



9387 Y1*



9730 C1*

*Indicates fabrics used in quilt pattern.
Fabrics shown are 25% of actual size.

Free Pattern Download Available

1384 Broadway New York, NY 10018
Tel. (800) 223-5678 • andoverfabrics.com

andover : makower uk